



Renewable, High-Quality Comprehensive,  
Low-Cost, Green, Low-Carbon New Energy  
A Manufacturer Of Sustainable Development Services



# PULITA ENERGY

A Manufacturer Specializing In Natural Gas Generator Set, Biogas  
Generator Set, LPG Generator Set, Biomass Gasifier System

*Healthy energy drives a better life*



**PULITA ENERGY**

[www.pulitaenergy.com](http://www.pulitaenergy.com)  
[www.hitepower.com](http://www.hitepower.com)

Electronic Brochure



Manufacturer: Shandong Pulita New Energy Technology Co., Ltd  
Address: Binhai Industrial Park, Binhai Economic Development Zone,  
Weifang City, Shandong Province, China.

Fax /Tel: +86, 5368878025

Phone: +8618678060186

Email: [sales@pulitaenergy.com](mailto:sales@pulitaenergy.com)

**PULITA**

PULITA ENERGY

PULITA ENERGY is a manufacturer specializing in continuous and emergency power generation equipment that established in 2010. The company integrates design, research and development, and manufacturing. We have an excellent technical team that can customize diversified power solutions for global customers based on customer needs and application scenarios, and provide stable, reliable, intelligent, and environmentally friendly generator sets and supporting power equipment.

The product categories that PULITA ENERGY can provide cover diesel generator sets, natural gas generator sets, biogas generator sets, petroleum-associated gas generator sets, biomass gas generator sets, containerized generator sets, mobile power stations, generator set control systems and parallel system, lighting towers, biomass gasifiers, CHP unit, etc., have been widely used in telecommunications, data centers, construction, mining, petrochemical, firefighting and rescue, large-scale competitions, renewable energy investment and other projects, providing continuous Various solutions such as power supply, emergency power supply, and power supply peak shift allocation.



## ENTERPRISE HONOR



## PRODUCTION ENVIRONMENT





## Pulita Gas Generator Set

- ◆ Efficient and environmentally friendly energy solution.
- ◆ Meet the demand for Gas Power Generator in many field.
- ◆ Widely used Natural Gas, Biogas, LPG, Biomass Gas.
- ◆ Customized design as customer requests.
- ◆ 24/7 after sales service, spare parts support service.

### Power Range

10-2000kW

### Main Application

- Gas Power Station
- Oil-field Production
- Commercial building
- Factory
- Residential Area



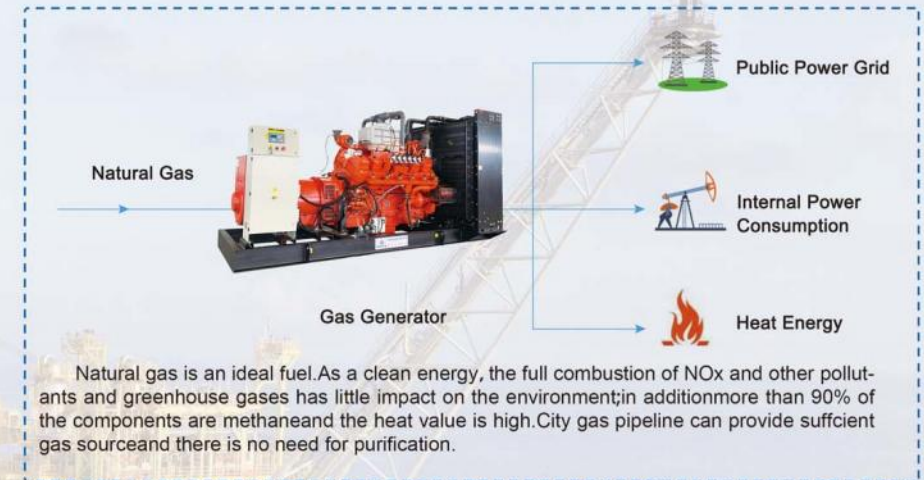
## Generator Supply Scope

- ✓ Gas Engine
- ✓ Brushless Alternator With AVR
- ✓ Intelligent Control Cabinet
- ✓ Steel Base Frame With Shock Absorber
- ✓ Flame arrester
- ✓ Gas Pressure Regulator
- ✓ Solenoid Switch Valve
- ✓ Gas filter
- ✓ Air-Fuel Mixer
- ✓ Ignition System
- ✓ Non-Maintenance Start Batteries

## Optional Parts

- Soundproof Canopy
- Remote control module
- Parallel & Synchronization Control
- CHP (Heat Recovery System)
- Biogas Purification Equipment

## Process flow chart





## Parts



**Gas Pressure Regular**  
Stable Pressure / Made in Italy



**Electronic throttle**  
Reduce Fuel Consumption



**Vibration Absorber**  
High Efficiency Shock Absorption



**Ignition System**  
Longer Life with Technology



**Air-fuel Mixer**  
IMPCO Brand / Made in USA



**Flame Arrester**  
Safe / Prevent Gas Combustion



**Circuit Breaker**  
Safe and long lasting

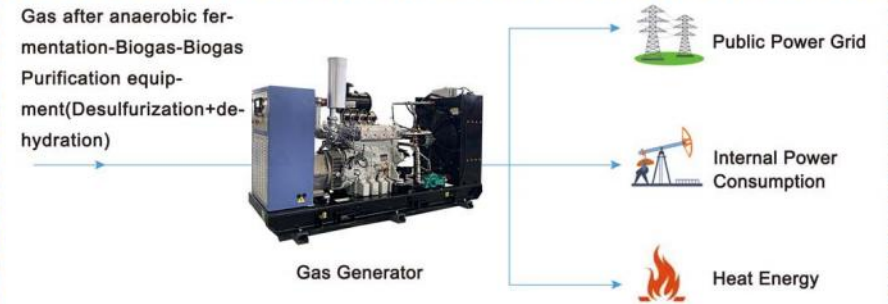


**Turbo-charger**  
Increase the Power of Genset

## Gas Genset



## Process flow chart



Biogas can be produced by anaerobic digestion with anaerobic bacteria, which digest material inside a closed system, or fermentation of biodegradable materials. Biogas is primarily methane (CH<sub>4</sub>) and carbon dioxide (CO<sub>2</sub>) and may have small amounts of hydrogen sulfide (H<sub>2</sub>S), moisture and siloxanes. The gases methane, hydrogen, and carbon monoxide (CO) can be combusted or oxidized with oxygen. This energy release allows biogas to be used as a fuel for power generation. Basically speaking, biogas refers to low BTU gas such as digester gas, landfill gas, sewage gas, city waste gas, sludge gas etc.



Syngas, or synthesis gas, is a fuel gas mixture consisting primarily of hydrogen, carbon monoxide, and very often some carbon dioxide. Syngas is usually a product of gasification and the main application is electricity generation. Syngas is combustible and often used as a fuel of internal combustion engines. It has less than half the energy density of natural gas. Syngas can be produced from many sources, including natural gas, coal, biomass, or virtually any hydrocarbon feedstock, by reaction with steam (steam reforming), carbon dioxide (dry reforming) or oxygen (partial oxidation). Syngas is a crucial intermediate resource for production of hydrogen, ammonia, methanol, and synthetic hydrocarbon fuels.



# Cummins Series Gas Generator Set

Cummins technology series gas generator is developed from cummins G-Drive 3.9L-38L engine on our independent research.

The engine used in this series of generators continues cummins compact design, using high-strength cylinders, integral crankshafts and efficient lubrication systems. The main heat load components were re-designed, such as cylinder head, piston, piston ring, the intake and exhaust valves, camshaft, exhaust pipe, etc. According to the fuel type re-designed the piston compression ratio, optimizing the gas intake phase position, reducing the engine temperature, to ensure the stability of the engine power output, extended engine life under high heat load conditions, we have selected high-performance ignition system (ECU) and "Impco" brand gas-air mixer, "Madas" brand pressure regulator assembled on the engine. Meanwhile using the latest lean burning technology to reduce the engine emissions.



## Feature

- High efficiency and Cost-effective
- Global spare parts supply
- Low emissions due to advantage technologies
- Low space requirement due to compact design
- Technical reliability of practical tests
- Long service life resulting from application-specific design

## Technical Parameter

Model	Generator spec.				Engine Spec.			Alternator	Controller	Dimensions	
	Prime Power		Standby Power		Engine model	Bore* Stroke (mm)	Dspl (L)	Faraday Model	Smartgen/ Deepsea	LxWxH (Open Type) mm	Weight kg
	kW	kVA	kW	kVA							
PLG-15GF	15	20	16.5	22	PL4B3.9-G	102*120	3.9	FD1ES	HGM6110/DSE7320	1800*900*1400	800
PLG-20GF	20	25	22	27.5	PL4B3.9-G	102*120	3.9	FD1F	HGM6110/DSE7320	1800*900*1400	800
PLG-25GF	25	30	27.5	33	PL4BT3.9-G	102*120	3.9	FD1G	HGM6110/DSE7320	1800*900*1400	900
PLG-30GF	30	37.5	33	41.2	PL4BT3.9-G	102*120	3.9	FD1J	HGM6110/DSE7320	1800*900*1400	900
PLG-35GF	35	43.75	38.5	48.1	PL4BT3.9-G	102*120	3.9	FD2B	HGM6110/DSE7320	1800*900*1400	900
PLG-40GF	40	50	44	55	PL4BTA3.9-G	102*120	3.9	FD2B	HGM6110/DSE7320	1800*900*1400	920
PLG-50GF	50	62.5	55	68.4	PL6B5.9-G	102*120	5.9	FD2C	HGM6110/DSE7320	2200*900*1400	1050
PLG-60GF	60	72.5	66	80	PL6BT5.9-G	102*120	5.9	FD2DS	HGM6110/DSE7320	2200*900*1400	1120
PLG-80GF	80	100	88	110	PL6BTA5.9-G	102*120	5.9	FD3A	HGM6110/DSE7320	2200*900*1400	1140
PLG-100GF	100	125	110	137.5	PL6CT8.3-G	114*135	8.3	FD3C	HGM6110/DSE7320	2450*1100*1650	1500
PLG-120GF	120	150	132	165	PL6CTA8.3-G	114*135	8.3	FD3D	HGM6110/DSE7320	2450*1100*1650	1550
PLG-150GF	150	200	165	220	PL6LTA8.9-G	114*135	8.9	FD3EM	HGM6110/DSE7320	2450*1100*1650	1550
PLG-200GF	200	250	220	275	PLNTA855-G	140*152	14	FD3H	HGM6110/DSE7320	3200*1000*1930	1700
PLG-250GF	250	300	275	300	PLKTA19-G	159*159	19	FD4M	HGM6110/DSE7320	3850*1530*2270	3300
PLG-300GF	300	375	330	412	PLKTA19-G	159*159	19	FD4L	HGM6110/DSE7320	3850*1530*2270	3300
PLG-400GF	400	500	440	550	PLKTA38-G	159*159	38	FD5M	HGM6110/DSE7320	4300*1620*2370	3700
PLG-500GF	500	625	550	687	PLKTA38-G	159*159	38	FD5L	HGM6110/DSE7320	4300*1620*2370	3700

## Note

Fuel: LNG, CNG, Natural Gas, LPG, Biogas.

All ratings are for guidance only, please refer to the specific genset technical data sheet for final power ratings.

All ratings data is based on operation under ISO8528 standard.

Available in the following voltage: 380V/220V, 400V/230V, 415V/240V, 440V/254V.



## Weifang Ricardo Styer Series Gas Generator Set

This series of gas engine designed based on Ricardo and styer model technical for the fuel of natural gas, liquid petrol gas, biogas, syngas and other combustible gas, which is special improved in accordance with the relevant state standard. We have re-designed main parts like cylinder, piston, crankshaft, connecting rod etc. Through introducing the import components, complete the combustion and intake&exhaust system of this series gas engine, ensure the whole engine's safety and tolerance, meanwhile the possible life-gas fuel ratio control and accurate ignition system make this series of engine ownership the character of compact structure, easy to start, low fuel consumption, enough power reserve and low cost.

### Feature

- High Cost-Effective
- Reliable performance
- Adapt to a variety of conditions
- The lower operation and maintenance costs

### Technical Parameter

Model	Generator spec.				Engine Spec.			Alternator	Controller	Dimensions	
	Prime Power		Standby Power		Engine Model	Bore* Stroke (mm)	Dspl (L)	Faraday Model	Smartgen/ Deepsea	LxWxH (Open Type) mm	Weight kg
	kW	kVA	kW	kVA							
PLG-15GF	15	20	16.5	22	PL4100G	100*120	4.1	FD1ES	HGM6110/DSE7320	1620*600*1320	620
PLG-20GF	20	25	22	27.5	PL4100G	100*120	4.1	FD1F	HGM6110/DSE7320	1620*600*1320	620
PLG-25GF	25	30	27.5	33	PL4102G	102*120	4.1	FD1G	HGM6110/DSE7320	1620*600*1320	620
PLG-30GF	30	37.5	33	41.2	PL4105G	105*120	4.5	FD1J	HGM6110/DSE7320	1750*740*1480	812
PLG-35GF	35	43.75	37.8	48.1	PL4105ZG	105*120	4.5	FD2B	HGM6110/DSE7320	1750*740*1480	850
PLG-40GF	40	50	44	55	PL6105G	105*130	6.7	FD2B	HGM6110/DSE7320	2150*740*1480	870
PLG-50GF	50	62.5	55	68.4	PL6105G	105*130	6.7	FD2C	HGM6110/DSE7320	2150*740*1480	870
PLG-60GF	60	72.5	66	80	PL6105ZG	105*130	6.7	FD2DS	HGM6110/DSE7320	2150*740*1480	870
PLG-80GF	80	100	88	110	PL10D-NG	126*130	10	FD3A	HGM6110/DSE7320	2850*740*1550	1600
PLG-100GF	100	125	110	137.5	PL10ZD-NG	126*130	10	FD3C	HGM6110/DSE7320	2850*740*1550	1600
PLG-120GF	120	150	132	165	PL10ZID-NG	126*130	10	FD3D	HGM6110/DSE7320	2850*740*1550	1600
PLG-150GF	150	200	165	220	PL12ZD-NG	126*155	12	FD3EM	HGM6110/DSE7320	2900*740*1650	2000
PLG-200GF	200	250	220	275	PL13ZD-NG	127*165	13	FD3H	HGM6110/DSE7320	3100*1000*1780	2400

### Note

Fuel: Natural Gas, Biogas, LPG, Biomass Gas.

All ratings are for guidance only, please refer to the specific genset technical data sheet for final power ratings.

All ratings data is based on operation under ISO8528 standard.

Available in the following voltage: 380V/220V, 400V/230V, 415V/240V, 440V/254V.



# Baudouin Series Gas Generator Set

Baudouin natural gas engines include WP4.1NG, WP5NG, WP7NG, WP10NG, WP12NG, WP13NG 6M33 12m26 12m33 16m33 12M55 (Product line up from 74kW to 1100kW), which meet the requirements of China state five emission, and China state six emission. They are widely used in a lot of industry areas such as 6-18m bus, Various trucks, engineering machinery, special vehicles, ship power, and other industries, with high reliability, strong power, energy saving and environmental protection.



## Feature

- Powerful to ensure uninterrupted operation
- Military products quality
- Low emissions due to advantage technologies
- Excellent cold starting performance
- Long service life resulting from application-specific design

## Technical Parameter

Model	Generator spec.				Engine Model	Engine Spec.			Alternator		Controller		Dimensions	
	Prime Power kW	Prime Power kVA	Standby Power kW	Standby Power kVA		Bore* Stroke (mm)	Dspl (L)	Faraday Model	Smartgen/ Deepsea Model	LxWxH (Open Type) mm	Weight kg			
PLG-30GF	30	37.5	33	41.2	WP4D40E300NG	105*130	4.5	FD3C	HGM6110/DSE7320	1820*738*1084	760			
PLG-50GF	50	62.5	55	68.4	WP4D66E300NG	105*130	4.5	FD3C	HGM6110/DSE7320	1931*738*1086	860			
PLG-80GF	80	100	88	110	WP6D100E300NG	105*130	6.75	FD3C	HGM6110/DSE7320	1931*738*1086	860			
PLG-100GF	100	125	110	137.5	WP6D132E300NG	105*130	6.75	FD3C	HGM6110/DSE7320	2532*950*1365	1085			
PLG-120GF	120	150	132	165	WP10D158E300NG	126*130	9.7	FD3D	HGM6110/DSE7320	2667*950*1322	1632			
PLG-150GF	150	187.5	165	206.3	WP10D200E300NG	126*130	9.7	FD3EM	HGM6110/DSE7320	2667*950*1322	1715			
PLG-180GF	180	225	198	248	WP12D238E300NG	126*155	11.6	FD3G	HGM6110/DSE7320	2713*950*1410	2010			
PLG-200GF	200	250	220	275	WP12D264E300NG	126*155	11.6	FD3H	HGM6110/DSE7320	2713*950*1411	2070			
PLG-250GF	250	312.5	275	342	WP13D317E300NG	127*165	12.5	FD4M	HGM6110/DSE7320	3110*1134*1450	2275			
PLG-350GF	350	437.5	385	481.3	6M33D450E310NG	150*185	19.6	FD5S	HGM6110/DSE7320	3800x1450x2000	4300			
PLG-400GF	400	500	440	550	6M33D450E310NG	150*185	19.6	FD5M	HGM6110/DSE7320	3800x1450x2000	4300			
PLG-500GF	500	625	550	684	12M26D605E300NG	150*150	31.8	FD5L	HGM6110/DSE7320	3747*1486*1909	5040			
PLG-600GF	600	750	660	825	12M33D690E310NG	150*185	36.6	FD6AS	HGM6110/DSE7320	5500x2000x2100	7500			
PLG-700GF	700	875	770	962.5	12M33D900E310NG	150*185	39.6	FD6B	HGM6110/DSE7320	5500*2000*2100	7500			
PLG-800GF	800	1000	880	1100	12M33D900E310NG	150*185	39.6	FD6C	HGM6110/DSE7320	5500*2000*2100	7500			
PLG-900GF	900	1125	990	1237.5	16M33D1050NG10	150*185	52.5	FD6D	HGM6110/DSE7320	6090x2300x2900	12300			
PLG-1000GF	1000	1250	1100	1375	16M33D1280NG10	150x185	52.5	FD7A	HGM6110/DSE7320	6090*2300*2900	12300			
PLG-1400GF	1400	1750	1925	1237.5	12M55D1588A0NG	180*215	65.6	FD7D	HGM6110/DSE7320	6090x2300x2900	13500			

## Note

Fuel:LNG, CNG, Natural Gas.

All ratings are for guidance only, please refer to the specific genset technical data sheet for final power ratings.

All ratings data is based on operation under ISO8528 standard.

Available in the following voltage:380V/220V, 400V/230V, 415V/240V, 440V/254V.



# Sinotruck Series Gas Generator Set

Sinotruck Generator is designed and manufactured to be high quality, long usage life, easy operation, low maintenance cost, high intelligence with low engine speed, low fuel consumption, low gas quality requirement, tough environmental adaptability, high stability and low fluctuation. The generator is desirable for industrial power solution.



## Feature

- Lower operation and maintenance costs
- Perfect plateau adaptability
- Reliable in use through onsite test
- Adapt to harsh conditions

## Technical Parameter

Model	Generator spec.				Engine Spec.			Alternator	Controller	Dimensions	
	Prime Power		Standby Power		Engine Model	Bore* Stroke	Dspl	Faraday	Smartgen/ Deepsea	LxWxH (Open Type) mm	Weight kg
	kW	kVA	kW	kVA		(mm)	(L)	Model			
PST-120GF	120	150	132	165	WT615 D-1	126*130	9.726	FD3D	HGM6110/DSE7320	2850*1000*1700	2100
PST-150GF	150	185	165	203.5	WT615 D-3	126*130	9.726	FD3EM	HGM6110/DSE7320	2850*1000*1700	2280
PST-160GF	160	200	176	220	WT615 D-5	126*130	9.726	FD3F	HGM6110/DSE7320	2850*1000*1700	2280
PST-200GF	200	250	220	275	T12D-1	126*155	11.596	FD3H	HGM6110/DSE7320	3300*1200*1800	2300
PST-250GF	250	312	275	343.2	T12D-5	126*155	11.596	FD4M	HGM6110/DSE7320	3300*1200*1800	2400
PST-280GF	280	350	308	375	MT13.15-300	126*166	12.419	FD4LS	HGM6110/DSE7320	3500*1240*1900	3200
PST-300GF	300	375	330	412	MT13.15-330	126*166	12.419	FD4L	HGM6110/DSE7320	3500*1240*1900	3400

## Note

Fuel: LNG, CNG, Natural Gas.

All ratings are for guidance only, please refer to the specific genset technical data sheet for final power ratings.

All ratings data is based on operation under ISO8528 standard.

Available in the following voltage: 380V/220V, 400V/230V, 415V/240V, 440V/254V.



# Doosan Series Gas Generator Set

Doosan Natural Gas Engines, based on Doosan's diesel engines meet the best-level performance even under harsh conditions thanks to proven heavy-duty and advanced fuel system-electric controlled air-gas mixture throttling and ignition system.



## Feature

- Low emissions due to advantage technologies
- Low space requirement due to compact design
- Long service life resulting from application-specific design

## Technical Parameter

Model	Generator spec.				Engine Spec.			Alternator	Controller	Dimensions	
	Prime Power		Standby Power		Engine Model	Bore* Stroke (mm)	Dspl (L)	Faraday Model	Smartgen/Deepsea	LxWxH (Open Type) mm	Weight kg
	kW	kVA	kW	kVA							
PLG-114GF	114	142.5	125.4	156.8	GE08TI	111*139	8.07	FD3DS	HGM6110/DSE7320	2500*950*1520	1550
PLG-157GF	157	196.3	172.7	215.6	GE012TI	123*155	11.05	FD3F	HGM6110/DSE7320	2750*1015*1460	2170
PLG-201GF	201	251.3	221.1	276.4	GV158TI	128*142	14.6	FD3H	HGM6110/DSE7320	2850*1390*1820	2320
PLG-258GF	258	322.5	283.8	354.8	GV180TI	128*142	18.27	FD4M	HGM6110/DSE7320	3000*1390*1820	2580
PLG-301GF	301	376.3	331.1	413.9	GV222TI	128*142	21.92	FD4L	HGM6110/DSE7320	3200*1400*1820	3400

## Note

Fuel: LNG, CNG, Natural Gas.

All ratings are for guidance only, please refer to the specific genset technical data sheet for final power ratings.

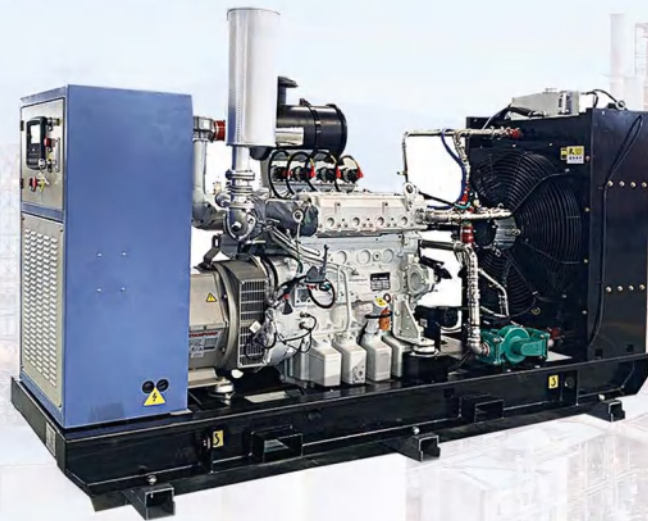
All ratings data is based on operation under ISO8528 standard.

Available in the following voltage: 380V/220V, 400V/230V, 415V/240V, 440V/254V.



# Man Series Gas Generator Set

Manufacturers and operators of CHP applications have strong requirements. Robust, compact engines have to work reliably 24 hours a day, 7 days per week. Economic operation over the life cycle of the entire plant is therefore essential. This requires a high level of efficiency by maximum utilisation of primary energy and low plant operating costs. With their continuous development programme, MAN engines always make a contribution to greater efficiency. Reliable and low in emissions.



## Feature

- High power and maximum efficiency
- Low operating costs as a result of low levels of lubricant and fuel consumption as well as extended service intervals (component stability)
- Low emissions due to state-of-the-art combustion technologies
- Low space requirement due to compact design
- Reliable in use thanks to field-tested technology
- Long service life resulting from application-specific design

## Technical Parameter

Model	Generator spec.				Engine Spec.			Alternator	Controller	Dimensions	
	Prime Power		Standby Power		Engine Model	Bore* Stroke (mm)	Dspl (L)	Faraday Model	Smartgen/ Deepsea	LxWxH (Open Type) mm	Weight kg
	kW	kVA	kW	kVA							
PLG-50GF	50	62.5	55	681	E0834E302	108*125	4.6	FD2C	HGM6110/DSE7320	2800*1050*1550	1600
PLG-100GF	100	125	110	137.5	E0836LE202	108*125	6.9	FD3C	HGM6110/DSE7320	3700*1150*1750	2200
PLG-200GF	200	250	220	275	E2676LE202	128*166	12.4	FD3H	HGM6110/DSE7320	4300*1300*2000	4400
PLG-250GF	250	312	275	342	E3262LE302	132*157	25.8	FD4M	HGM6110/DSE7320	4300*1300*2000	4600
PLG-400GF	400	500	440	550	E2842LE232	132*157	25.8	FD5M	HGM6110/DSE7320	5200*2000*2100	6400
PLG-520GF	500	625	550	681	E3262LE202	132*157	25.8	FD5LP	HGM6110/DSE7320	5500*2000*2100	7500

## Note

Fuel: LNG, CNG, Natural Gas, Biogas.

All ratings are for guidance only, please refer to the specific genset technical data sheet for final power ratings.

All ratings data is based on operation under ISO8528 standard.

Available in the following voltage: 380V/220V, 400V/230V, 415V/240V, 440V/254V.



# 190 Series Gas Generator Set

Pulita 190 series gas generator set selected 190 series gas engine assembly high efficiency Faraday generators, through DeepSea automatic controller to achieve stable power output. The power performance, fuel economy and reliability of this gas engine reach world advanced level by adopting world advanced mixing model, electronic control technology and lean-burn strategy. The series of gas generating units can work both single or parallel operation according to the user's requirement. It has outstanding performance in the oil field drilling, natural gas power plants, biogas power generation, coal mine gas power generation.



## Feature

- Long service life resulting from application-specific design
- Lower operating and maintenance costs
- Low emissions due to advantage technologies
- Reliable in field-tested
- Adapt to harsh conditions

## Technical Parameter

Model	Generator spec.				Engine Spec.			Alternator	Controller	Dimensions	
	Prime Power kW	Standby Power kVA	Prime Power kW	Standby Power kVA	Engine Model	Bore* Stroke (mm)	Dspl (L)	Faraday Model	Smartgen/ Deepsea	LxWxH (Open Type) mm	Weight kg
PLG-400GF	400	500	440	550	12V190DT2-2	190*210	71.4	FD5M	HGM6110/DSE7320	5200*2200*2610	10800
PLG-450GF	450	563	495	619	12V190ZDT-2	190*210	71.4	FD5MP	HGM6110/DSE7320	5200*2200*2610	10800
PLG-500GF	500	625	550	688	G12V190ZLDT-1	190*210	71.4	FD5L	HGM6110/DSE7320	5120*2040*2778	12000
PLG-550GF	550	688	605	756	12V190ZDT1-2	190*210	71.4	FD5LP	HGM6110/DSE7320	5120*2040*2778	12000
PLG-600GF	600	750	660	825	12V190ZDT1-1	190*210	71.4	FD6AS	HGM6110/DSE7320	5120*2040*2778	12000
PLG-1100GF	1100	1375	1210	1513	H16V190ZLT-2	190*210	71.4	FD7A	HGM6110/DSE7320	5735*2030*2700	18000
PLG-406GF	1200	1500	1320	1650	H16V190ZLT-2	190*210	71.4	FD7B	HGM6110/DSE7320	5735*2030*2700	18000
PLG-1200GF	1200	1500	1320	1650	H16V190ZLT-2	190*210	71.4	FD7B	HGM6110/DSE7320	5735*2030*2700	18000
PLG-1500GF	1500	1875	1650	2063	H16V190ZLT-1	190*215	97.4	FD7D	HGM6110/DSE7320	6070*2380*2650	24000
PLG-2000GF	2000	2500	2200	2750	H20V190ZLT-1	190*255	144.6	FD7E	HGM6110/DSE7320	7200*2300*2780	28000

## Note

Fuel: LNG, CNG, Natural Gas, Biogas.

All ratings are for guidance only, please refer to the specific genset technical data sheet for final power ratings.

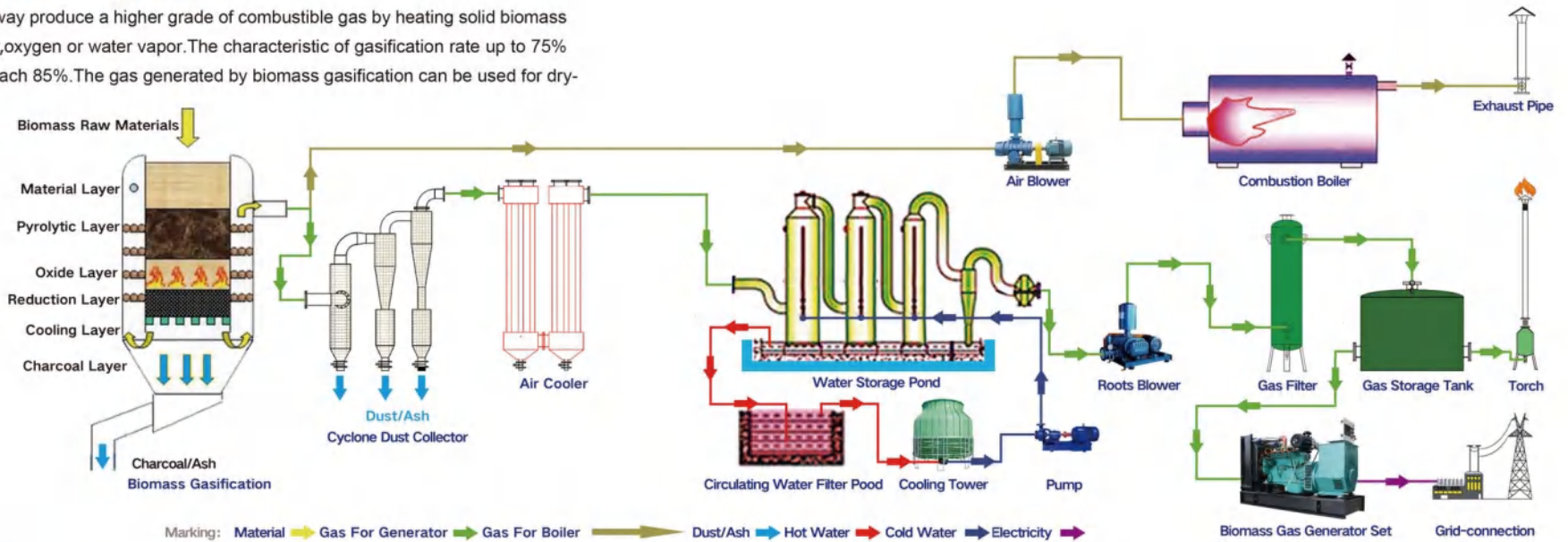
All ratings data is based on operation under ISO8528 standard.

Available in the following voltage: 380V/220V, 400V/230V, 415V/240V, 440V/254V.



# Biomass Gasifier System

Biomass Gasification is the way produce a higher grade of combustible gas by heating solid biomass in a gasifier, while introducing air,oxygen or water vapor.The characteristic of gasification rate up to 75% or more,thermal efficiency can reach 85%.The gas generated by biomass gasification can be used for drying, heating, power generation and other applications.The use of biomass energy has a positive effect on the establishment of distributed energy, the disposal of agricultural waste and municipal waste, and the improvement of energy efficiency.



## Raw Material can be gasified

For biomass gasification,the most important thing is that the biomass raw material contains pyrolysis gasification organic matter that is volatile. At present,the most common raw materials for biomass gasification are rice husk,wood chips,sawdust,straw,peanuts shell, corn cob,palm shell,horse manure,refuse derived fuel and so on. Different raw materials corresponding to different treatment methods and with different design of biomass gasifier, the gas composition is not the same,the caloric value is also different.



Wood pellets



Sawdust



Coconut Shell



Palm Shells



Peanut Shells



Rice Husk



straw



Bamboo Waste



Corn Stalk



Wood chips



Cow Manure



suger bagasse



# Biomass Gasifier System

Green renewable energy creates more value.



## Feature:

- Adaptability Of Raw Materials Is Strong
- Controlled By Plc Intelligent System
- Skid-mounted, Convenient For Transport And Install
- Low Carbon,Low Tar,and Environmental Friendly
- Cogeneration Accepted, High Energy Efficiency Utilization.
- Dry Purification Technology, avoid The Second Water Pollution.

## Technical Parameter

Gasifier Model	Gas output (m³/h)	Self-consumption KW	Consumption Material (kg/h)	Generating Power	Generator Set Model	Engine Model	Gas rate
PLT-30W	30	2kw	15	10kw	HTB-10GF	HTB-485D	25m³/h
PLT-50W	50	2.5kw	22.5	15kw	HTB-15GF	HTB-4100D	40m³/h
PLT-60W	60	3kw	30	20kw	HTB-20GF	HTB-4105D	50m³/h
PLT-100W	100	3KW	45	30kw	HTB-30GF	HTB-6105D	85m³/h
PLT-120W	120	4KW	60	40kw	HTB-40GF	HTB-6105D	110m³/h
PLT-150W	150	5KW	75	50kw	HTB-50GF	HTB-615D	140m³/h
PLT-200W	200	5KW	90	60kw	HTB-60GF	HTB-615D	165m³/h
PLT-250W	250	8KW	120	80kw	HTB-80GF	HTB-618D	220m³/h
PLT-300W	300	10KW	150	100kw	HTB-100GF	HTB-6160D	280m³/h
PLT-400W	400	12KW	180	120kw	HTB-120GF	HTB-6160D	330m³/h
PLT-500W	500	15KW	225	150kw	HTB-150GF	HTB-6170D	420m³/h
PLT-600W	600	20KW	300	200kw	HTB-200GF	HTB-6190D	560m³/h
PLT-700W	700	25KW	360	240kw	HTB-240GF	HTB-6200D	680m³/h
PLT-900W	900	30KW	450	300kw	HTB-300GF	HTB-6200D	840m³/h
PLT-1000W	1000	30KW	500	320kw	HTB-320GF	HTB-6200D	900m³/h
PLT-1200W	1200	40KW	600	400kw	HTB-400GF	12V190ZDT	1120m³/h
PLT-1500W	1500	50KW	750	500kw	HTB-500GF	HTB-6200D*2	1400m³/h
PLT-1800W	1800	60KW	960	600kw	HTB-600GF	16V190ZLT	1680m³/h
PLT-2000W	2000	65KW	1000	640kw	HTB-640GF	16V190ZLT	1800m³/h
PLT-2500W	2500	80KW	1200	800kw	HTB-800GF	16V190ZLT	2250m³/h
PLT-3000W	3000	100KW	1500	1000kw	HTB-1000GF	20V190ZLT	2800m³/h

## Supply Scope:

- |                                |                         |                                    |
|--------------------------------|-------------------------|------------------------------------|
| Feeding system                 | Gasifier furnace body   | Roots blower fan                   |
| Cyclone Dust Cooling equipment | Air cooling             | Gas Cooling filter                 |
| Water Cooling                  | Gas purification device | Gas flare                          |
|                                |                         | Ash Disposal System                |
|                                |                         | Biomass gas (syngas) generator set |

## Note:

Requirement of the feedstock Materials size is ≤5 cm,moisture content ≤20 %.

## Application Of Biomass Gasification



Power Generator for self use or to the grid



Charcoal Making



Industrial burner or Boiler



Gas Centralized Supply



## Fixed bed gasifier system

The fixed bed gasifier is divided into updraft fixed bed gasifier and downdraft fixed bed according to the gas flow direction. Gasification reaction of fixed bed gasifier generally occurs in relatively stationary bed that has low requirements on raw materials and its moisture content. The structure of the updraft fixed bed is simple, the moving direction of the gas and the material is opposite that leading the heat temperature fully utilized and the gasification efficiency is high. The direction of movement of the gas and the material in the downdraft fixed bed is the same, the pyrolysis gas passes through the higher temperature zone, resulting in higher calorific value of the combustible gas and less tar content. Pulita New Energy Technology can provide the appropriate gasification solution according to different raw materials and application requirements.



## Fluidized bed gasifier system

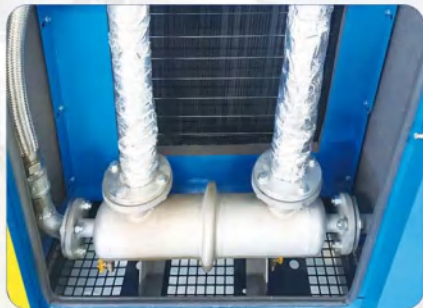
Unlike the design of fixed beds, fluidized bed gasifiers have strict requirements for the size and humidity of raw materials. In the reaction with the gasifier, the material in the furnace was "boiling" state, the furnace temperature is higher, faster gasification, so the gasification efficiency is very high, gas production is relatively stable. The type of gasifier is more suitable for rice husk, peanut shell, sawdust, pulverized coal and other crushed raw materials gasification.





# CHP/CCHP

Gas generator set fully exchanged the heat of exhaust gas and high temperature circulating water of the engine through gas heat recovery system and plate heat exchanger in order to achieve the purpose of energy-utilized. The recovery medium hot water can be used for house warm and biogas reaction pool winter heating preservation.



# Biogas Purification Equipment

Biogas from the anaerobic fermentation plant output, especially in the temperature or high temperature fermentation, carrying many H<sub>2</sub>S. Due to the presence of large amounts of water vapor in the biogas, water and H<sub>2</sub>S in biogas work together to accelerate the corrosion and clogging of metal pipes, valves and flowmeters. In addition, H<sub>2</sub>S generated after combustion of SO<sub>2</sub>, and combustion products in the water vapor combined into sulfurous acid, so that the metal surface of the device corrosion, and cause pollution of the atmospheric environment, affecting human health. Therefore, before using biogas, it is necessary to remove the H<sub>2</sub>S and the water therein.

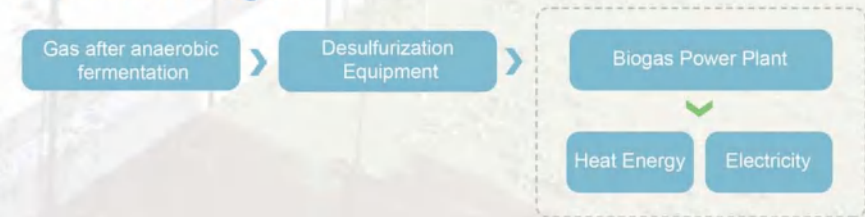
We provide the biogas purification system includes a dry desulfurization tank and gas-water separator. Desulfurization tank contains the main steel structure, desulfurizer filler, observation window, pressure gauge, thermometer and other components. During the process of reaching the top through the desulfurization filler layer, the H<sub>2</sub>S reacts with the Fe<sub>2</sub>O<sub>3</sub> desulfurizer to achieve the purpose of removing H<sub>2</sub>S (below 20mg/ m). The gas-water separator removes the water from the gas by mechanical and physical dedicated raw material.



Carbon steel  
Process flow diagram



Stainless Steel





## Biogas Torch

PLC control,high degree of automation,touch screen for parameter setting,modification,status display etc.

The torch is controlled in two modes:A. Biogas pressure automatic control mode;B. Manual control mode.The main body of the torch is all made of SUS304 stainless steel Under normal combustion conditions,the combustion chamber temperature is maintained at 850C°-1000C°.At this temperature,the methane in the gas can burn at over 99%.The combustion torch mainly uses automatic air suction to mix the biogas and air evenly and fully in the best ratio under limited conditions and to complete the full combustion in the combustion chamber.



### Feature

- Wind and rain proof.
- Automatic PLC control/Manual control control.
- Stable combustion head and long service life.

## Energy Storage Battery

Advanced,high-performance energy storage system which has proven itself in thousands of households,every single day.By using corresponding PV with System will enable you cover 80%~100% of your annual energy demand with self-produced and clean energy.By taking power from your house roof,you don't need to spend time to calculate and pay the electricity bill every month which make you be the real master of your energy and reduce the costs to a minimum.



## Wide-Solar-Gas Generator Hybrid Generating System

Wind-solar-gas generator hybrid generating system using wind turbine,solar energy,gas generators (biogas,natural gas,liquefied petroleum gas,biomass gas,etc.), intelligent controller,battery,Inverter,cable and support and auxiliary components to form a power generation system. The system generating by wind power at night and rainy days,by solar power when sunny,the generator will be auto started if both the wind and the sun are not available.The all-weather power generation function is more economical, scientific and practical then single energy.

### Feature

- Customizable capacity battery pack
- Reliable controller with inverter
- Wind turbine with electric variable pitch
- Efficient solar polysilicon chip
- Reliable gas generator set
- Designed the system life of 20 years



## Solar Panel Carport



### Feature

- Sample but stable installation
- Easy and quick fixed
- Flexiable
- A high recyclable value



# Supporting Equipment

## ■ Silent Canopy



Scientific and efficient soundproof design can effectively reduce the noise of the generator to 70dB-75 dB. The use of fire-proof silencer sponge to ensure the safety of generating units.

## ■ Paralleling Cabinet



This system can connect generator sets in parallel or connect the generator set to the grid automatically.

## ■ Containerized design



Containers are widely used for transporting goods in international trade. For large power ratings gas generators, Pulita can integrate the generator together with standard container for customers. In one hand, container design gensets can endure rough weather and environment condition. In the other hand, standard container gensets will reduce the freight cost sharply.

## ■ Automatic Transfer Switch



Automatic start genset when main power failed, Automatic stop genset when main power recovered.

## ■ Remote Control Module



It not only can realize genset monitoring, but also can be connected with some digital alarm inputs, to realize monitoring of genset entrance guard, prevention of burglary, fire control etc. ancillary facilities.

# Success cases



Indonesia 27 Units Natural Gas Generator Set



Philippines 150kVA Biogas Generator Set



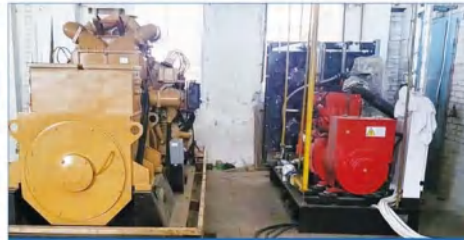
China 400kW Biomass Generator Set



China 1000m3 Biogas Purification Equipment



Greece 50kW Biomass Gasification System



Russia 300kW Natural Gas Generator Set



China Oil Associated Gas Generator Set



Italy 200kW Biomass Gasifier System



Nigeria 5 Units LPG Generator Set



Russia 600kW Natural Gas Generator Set



Japan 20kW Biogas Cogeneration Unit



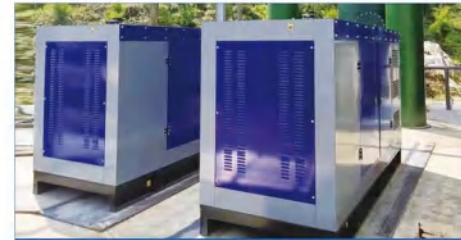
Mexico Paralleling 200kWx2 Natural Gas Generator Set



Nigeria 13 Units LPG Generator Set



Thailand 7 Units Biogas Generator Set



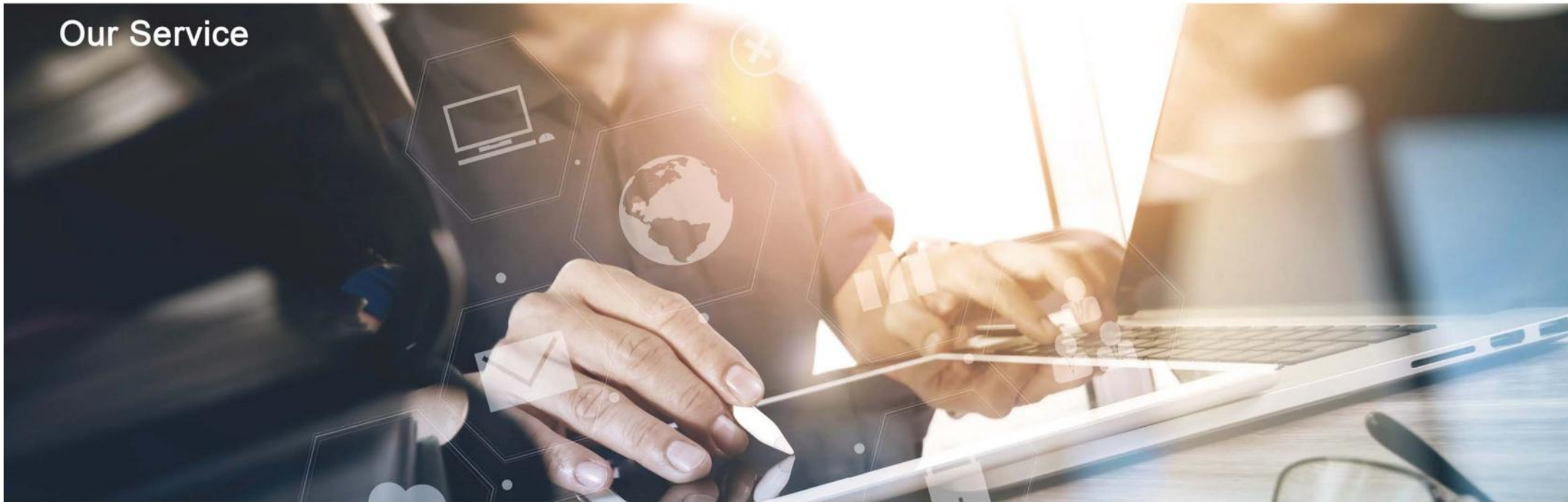
Taiwan 200kW Biogas Generator set



UK 20kW Containerized Biogas Cogeneration Unit



## Our Service



### ★ Quality insurance

For each category generator provided in our company, all can share 12 months or 1500 work hours maintenance. All the troubles arose from the structure defect, We guarantee to repair. Otherwise, we don't provide the quality insurance such as wearing parts, daily consumable parts, wrong man-made operation and maintenance ignorance.

### ★ Before sales service

Pre-sale free charge: burden capacity analysis, category selection, technology consultation, assistance with machinery room collocation and advice for facilities installation.

### ★ Sales service

For helping customers to master the operation, usage and the maintenance correctly, Our company in particular provide free site and training courses of different types of generators.

### ★ After sales service

Our company attaches great importance to after-sales service, the user to establish a computer archive, tracking services, regular inspection services. Maintenance center with a rapid response management system, when we receive a notification from customers, we will assist to solve the trouble within 1 hour. If fail, our after-sale service department will arrange people from the nearest maintenance point to help solve. Any customer's complaints about quality, we will strictly follow the principle to give customers a satisfying answer in the shortest time.